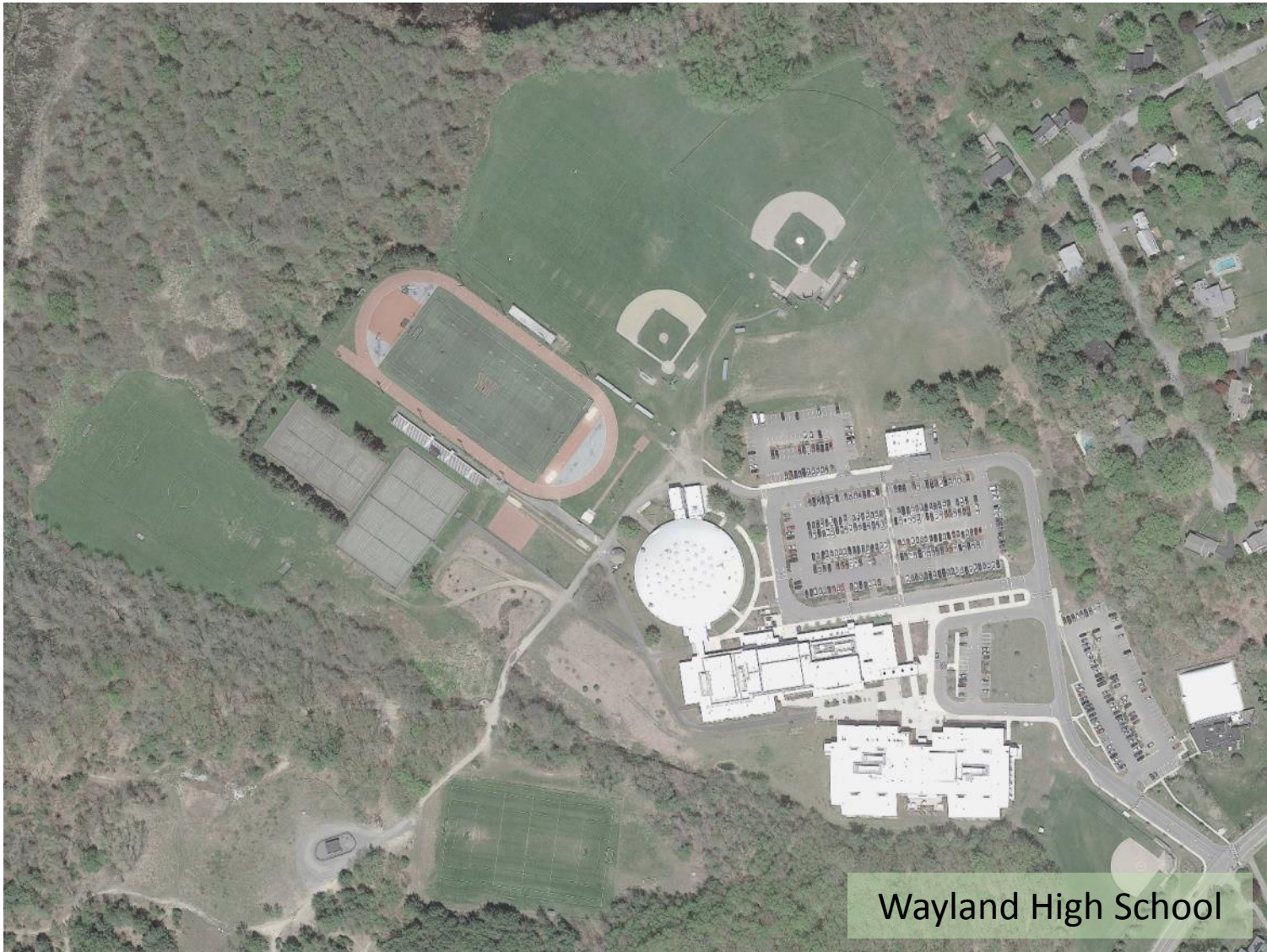


# Wayland, Massachusetts

## High School Athletic Facility Strategic Master Plan | 2017



### Public Meeting #3

May 23, 2017



## Meeting Agenda

1. Timeline of Master Plan Process: How We Got Here
2. Existing Conditions Analysis + Urgency of Repairs + Site Constraints
3. Environmental Compliance + Well Head Protection
4. Preferred Improvements Plan | Budget + Phasing Considerations
5. Open Discussion | Q + A



## 1. Timeline of Master Plan Process

How Did We Get To Where We Are Today

Construction of the Current Stadium Complex

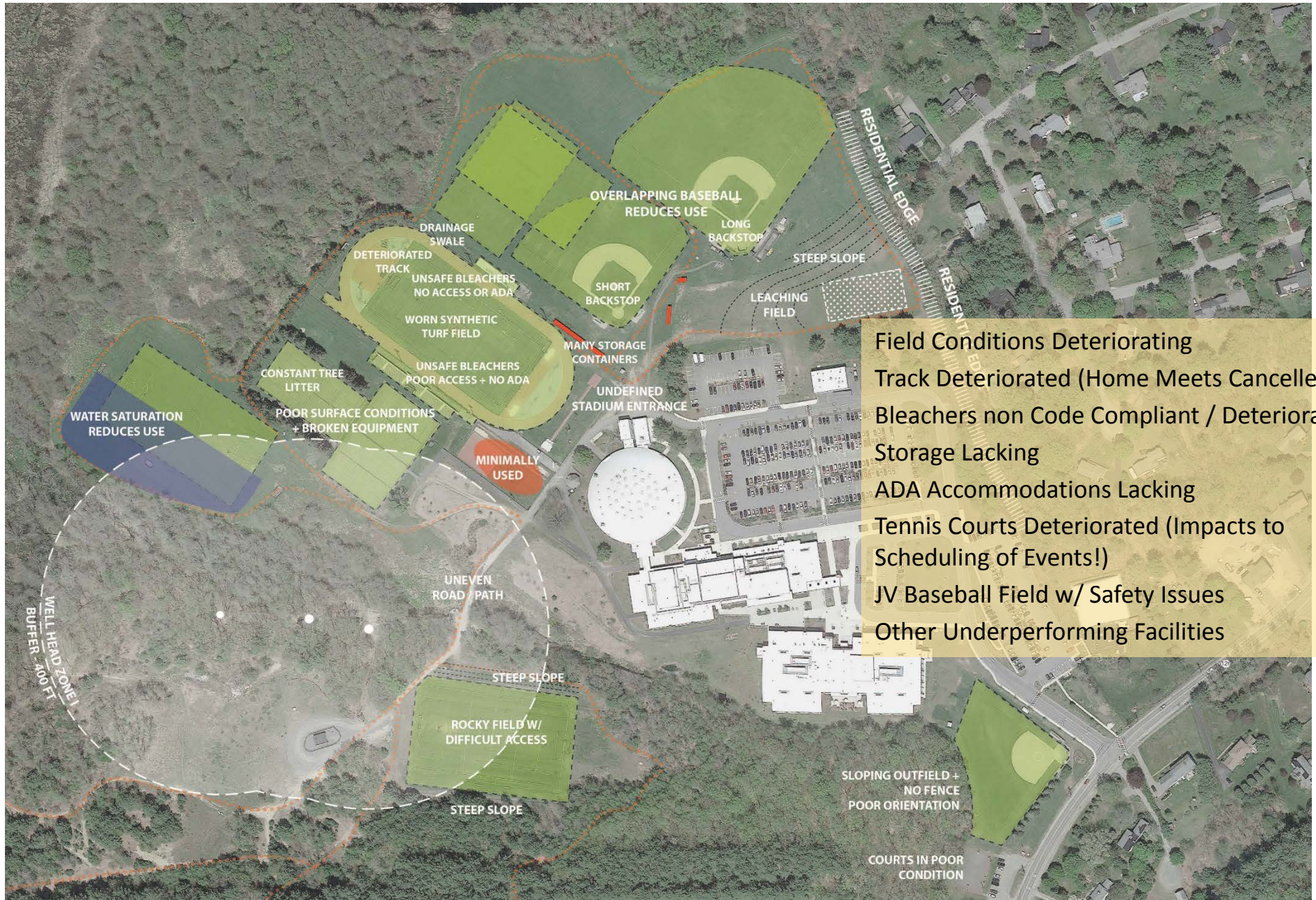
Prior Studies + Documents

What is the Current Mission

Public Engagement (and what we have heard)

Next Steps

# Wayland High School Athletic Facility Strategic Master Plan | 2017



## 2. Existing Conditions Analysis + Urgency of Repairs + Site Constraints



## 2. Existing Conditions Analysis + Urgency of Repairs + Site Constraints

**Timing is a critical concern**

**Funding needs to be secured**

**Project designed, permitted + bid**

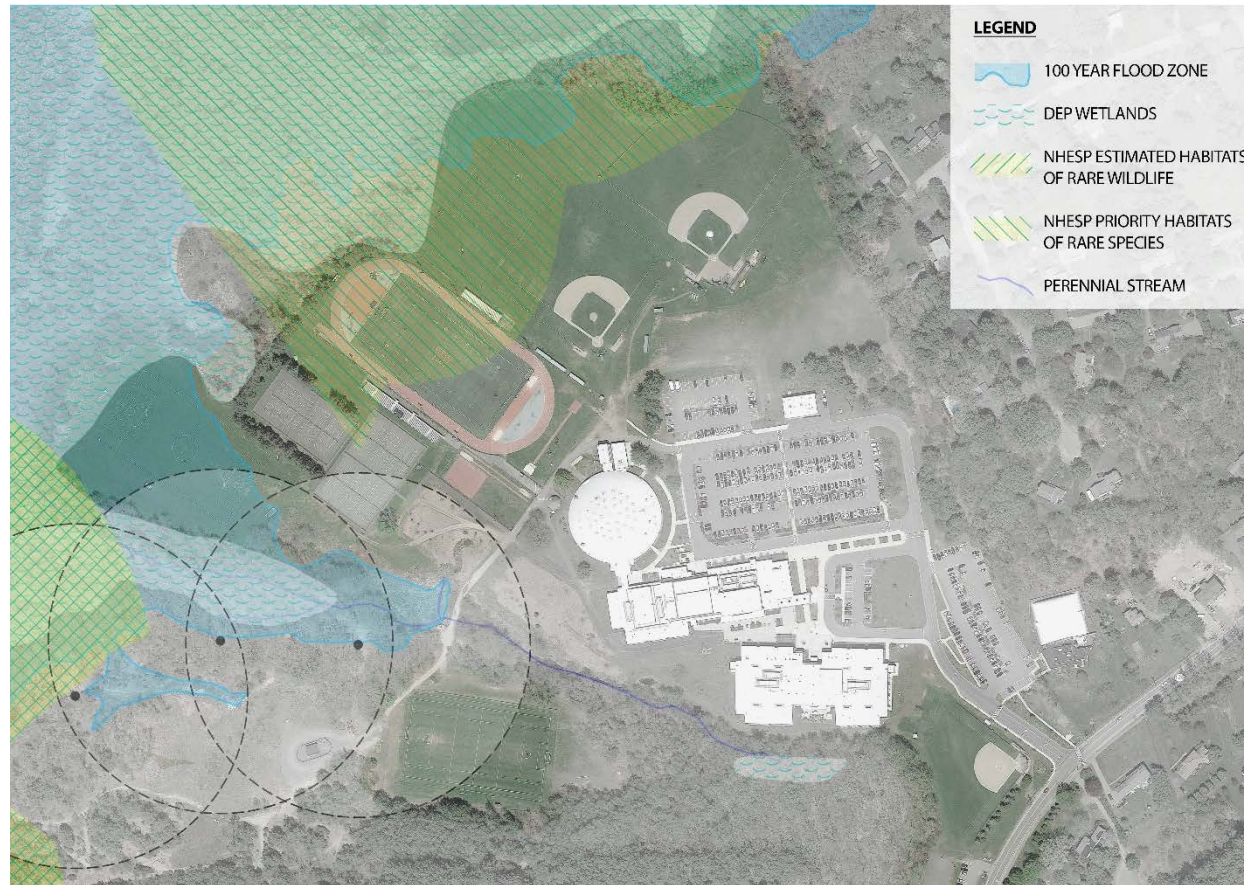
**Project constructed**

**Practice + game locations shifted during construction**

### Approximate Timeline for Corrective Action

Secure Funding	6-12 months
Design + Permitting	+/- 6 months
Bidding Process	2-3 months
Construction	6-12 months (phase dependent)
Grow In Period	To be determined

# Wayland High School Athletic Facility Strategic Master Plan | 2017



## 2. Existing Conditions Analysis + Urgency of Repairs + Site Constraints

Well Head Protection Zones

Wetland Resource Areas

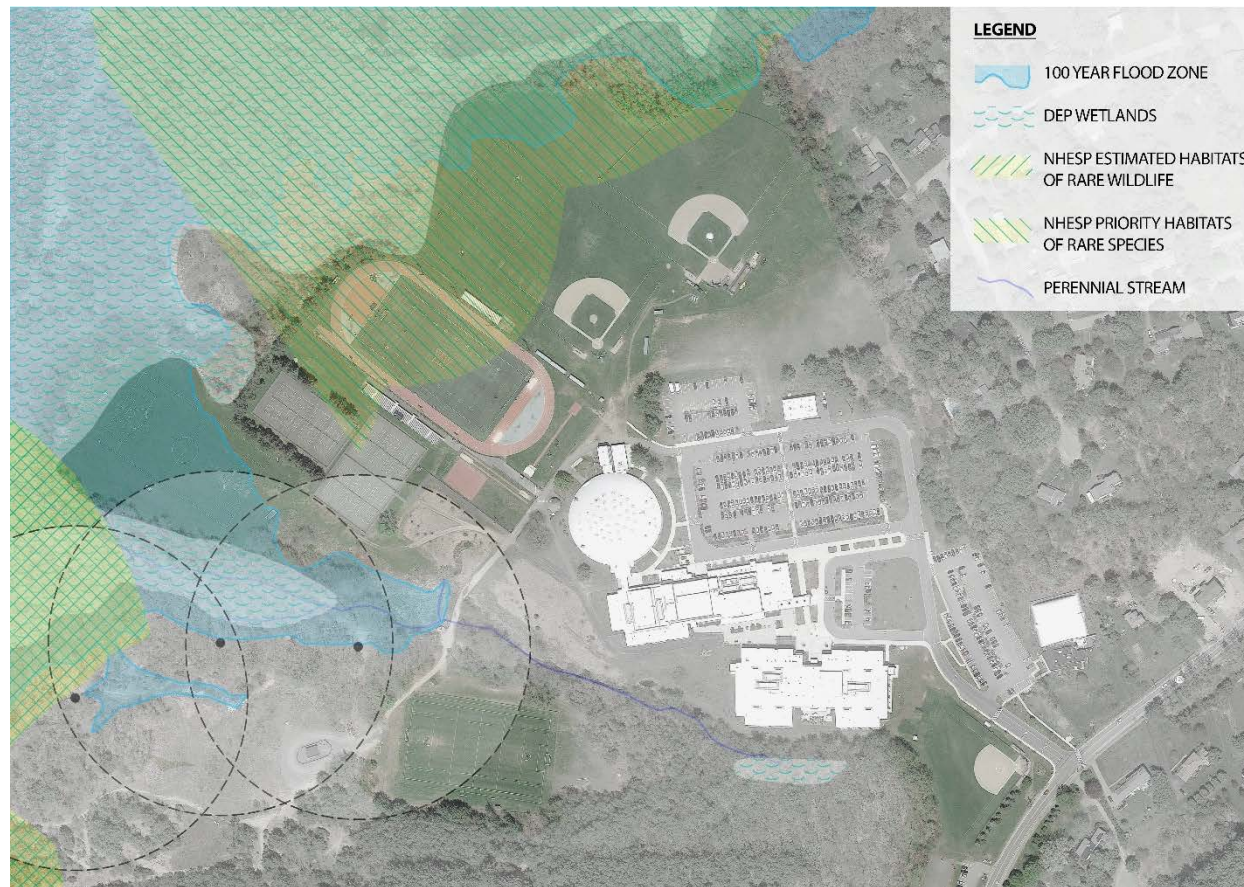
Sudbury River Watershed | Wildlife Habitat Protection

Floodplain

Topography

Soil Conditions + Irrigation

# Wayland High School Athletic Facility Strategic Master Plan | 2017



## 3. Environmental Compliance + Well Head Protection

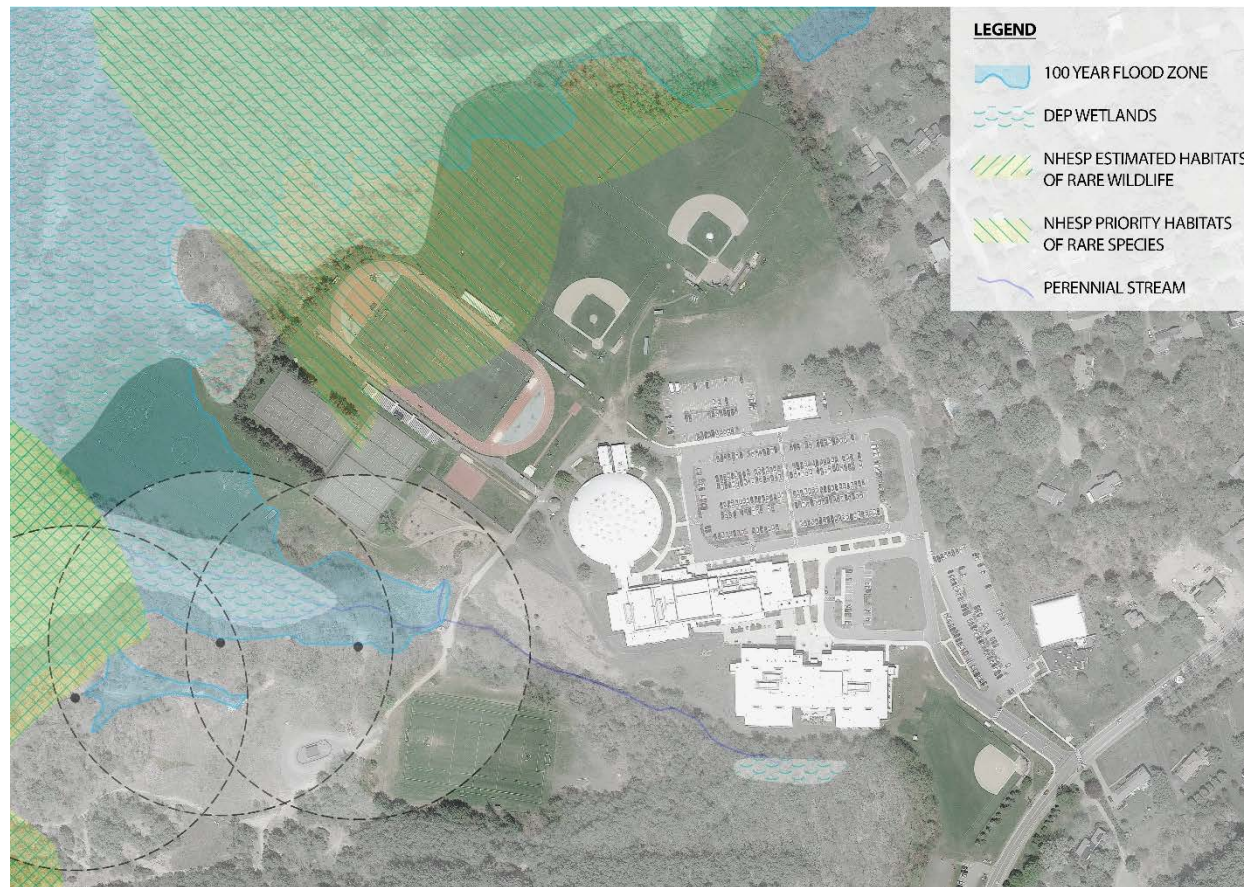
Notice of Intent Order of Conditions

Superseding Order of Conditions from DEP

Settlement Agreement

Past Compliance + the Eggleston Report | Going Forward Compliance

# Wayland High School Athletic Facility Strategic Master Plan | 2017



## 3. Environmental Compliance + Well Head Protection

**Pumping Test Report (Tata + Howard)**

**Drinking Well Locations**

**2010 Capture Zone (Approximate Limits)**

**Clay Underlay**

**Zone 1 vs. Zone 2 Capture Zone Primer**



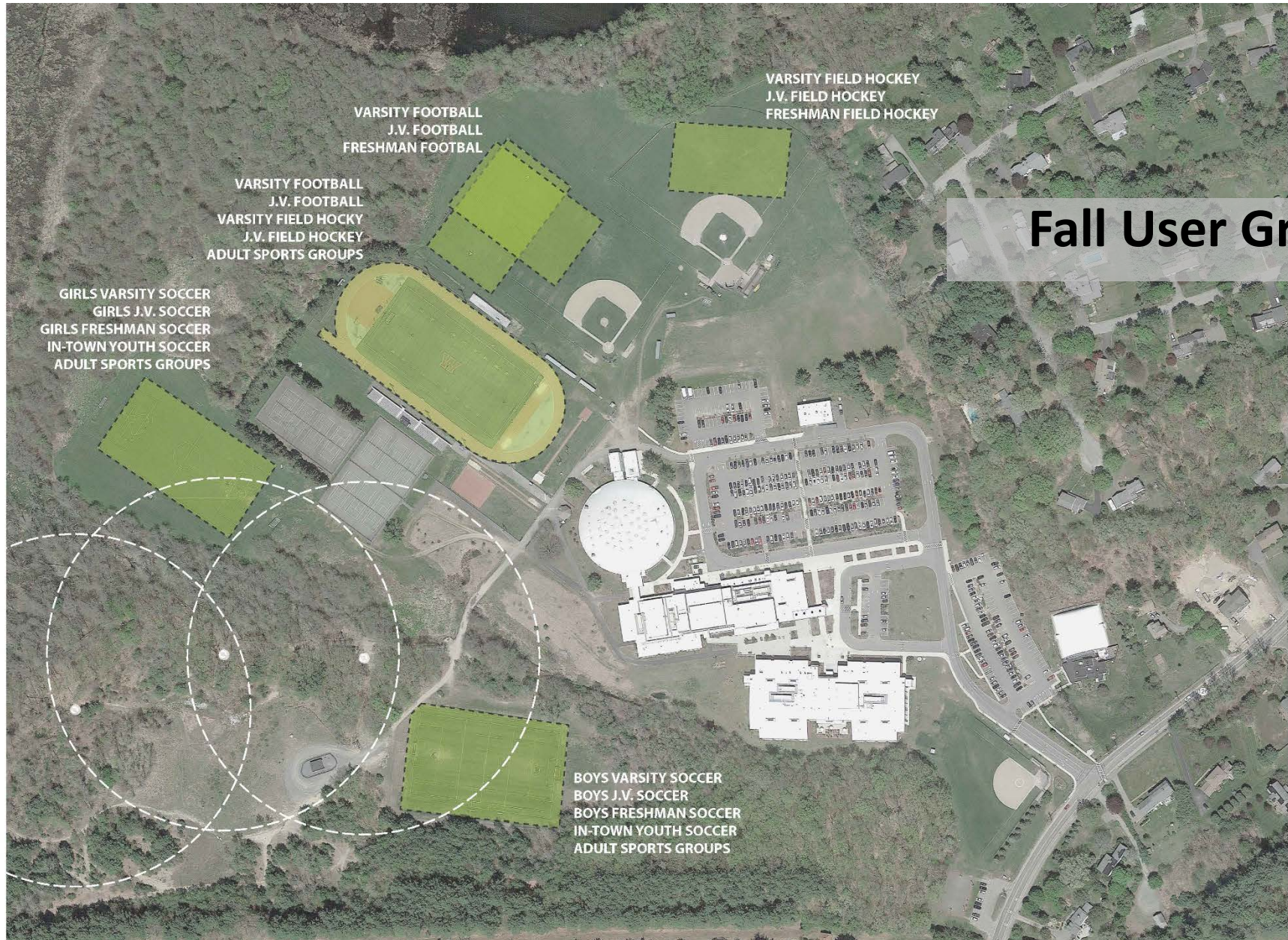
# Wayland High School Athletic Facility Strategic Master Plan | 2017



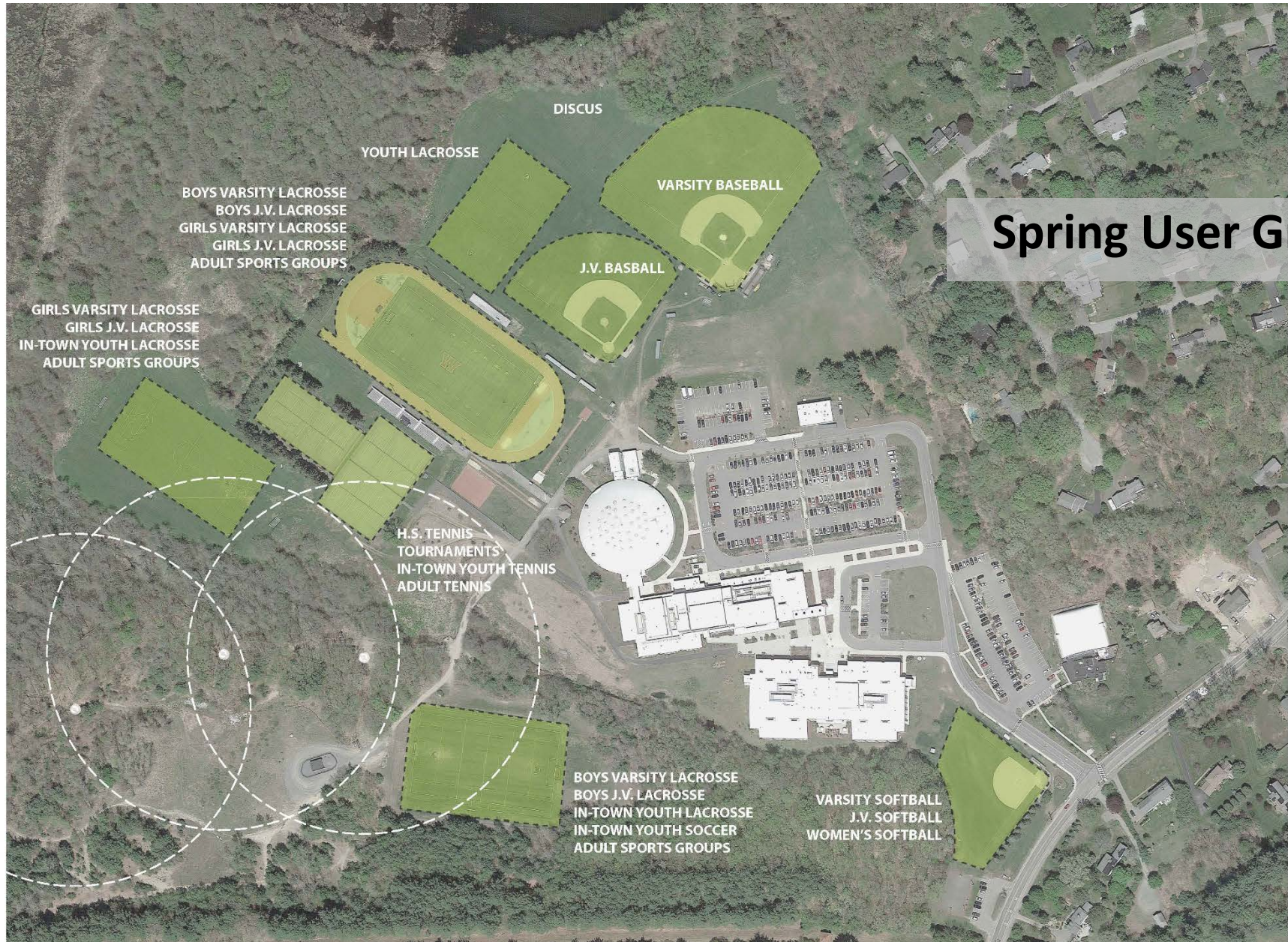
All User Groups

## 4. Preferred Improvements Plan – Existing Users

# Wayland High School Athletic Facility Strategic Master Plan | 2017



## 4. Preferred Improvements Plan – Existing Users

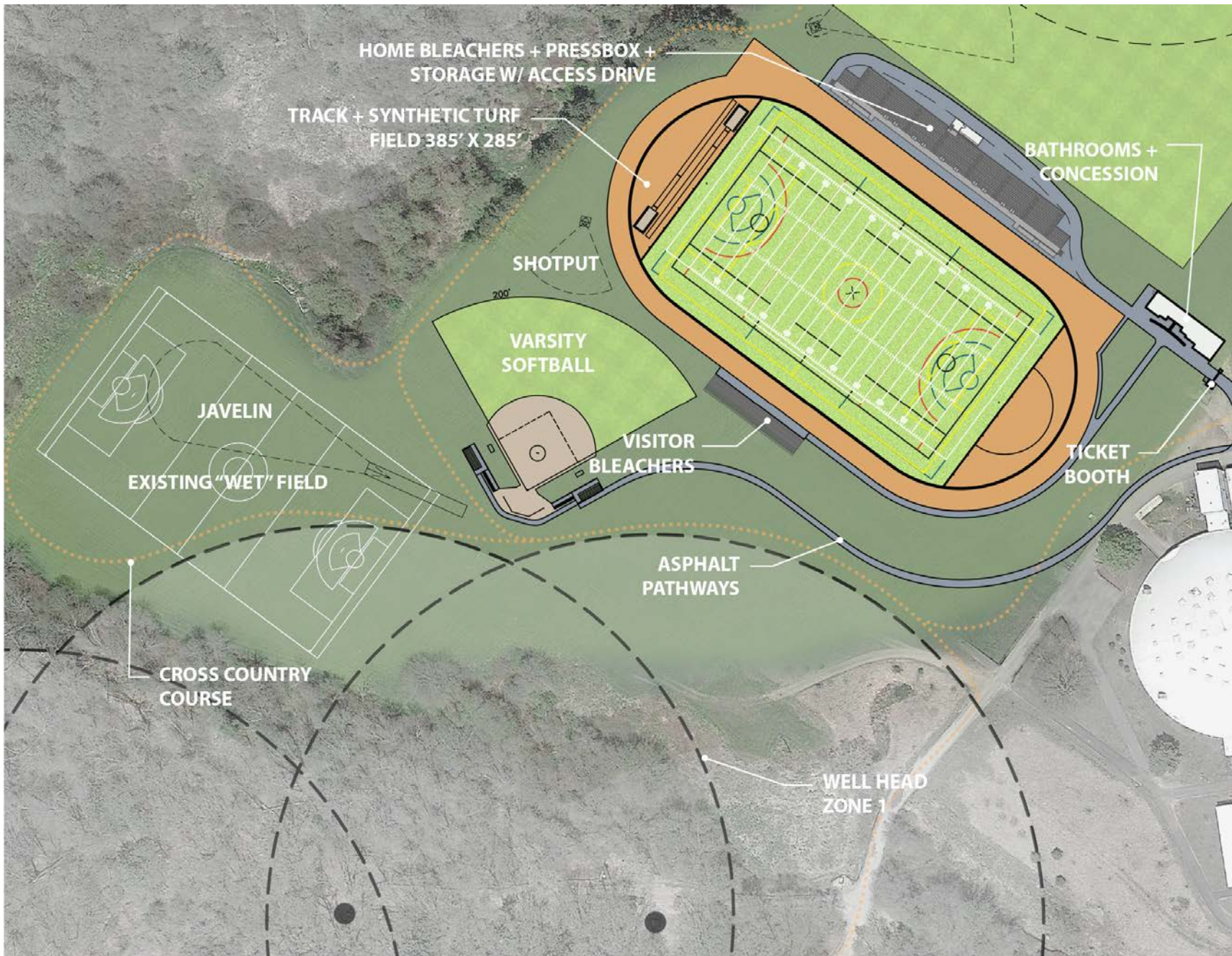


## 4. Preferred Improvements Plan – Existing Users



## 4. Preferred Improvements Plan

# Wayland High School Athletic Facility Strategic Master Plan | 2017

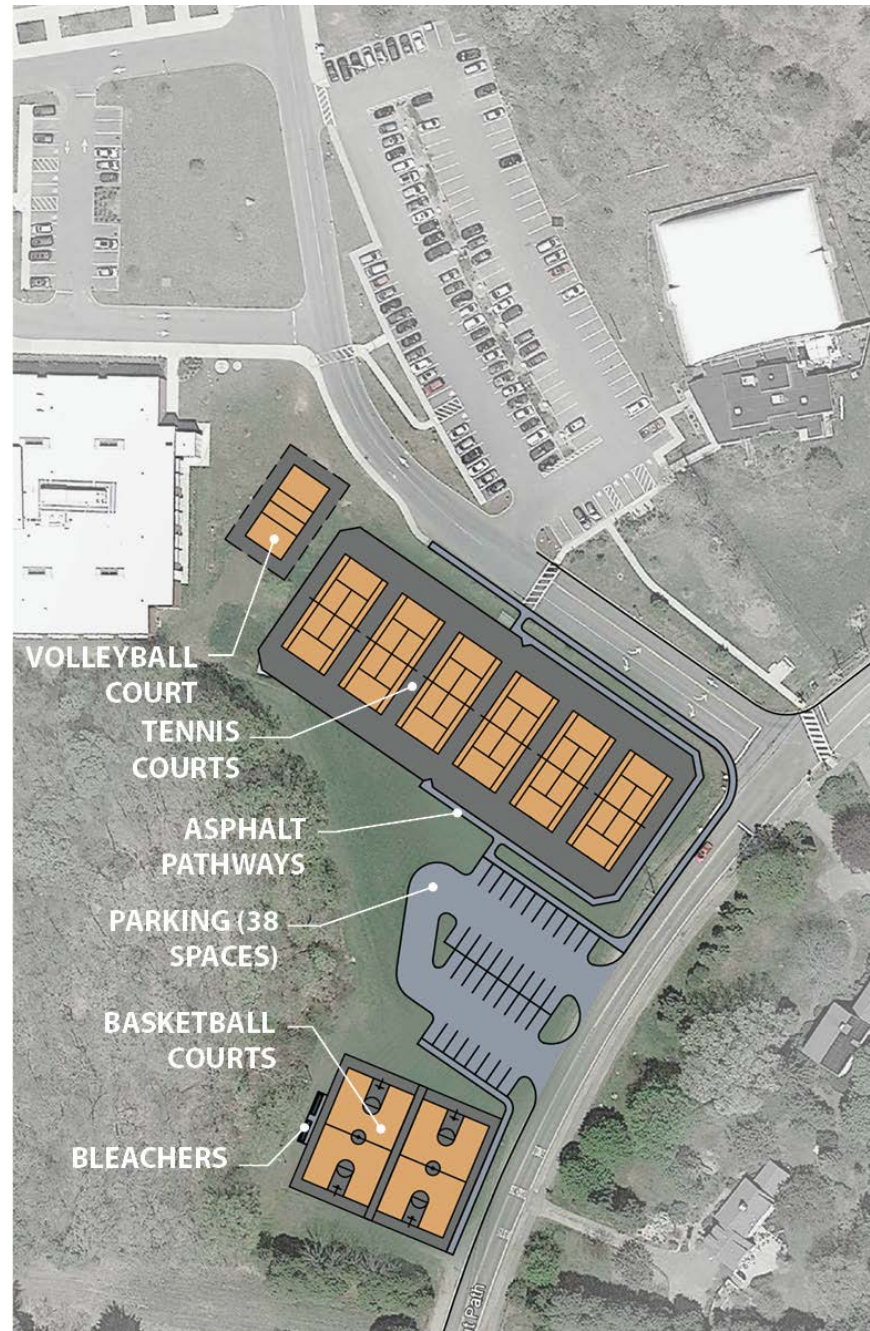


## 4. Preferred Improvements Plan (Enlargement A)

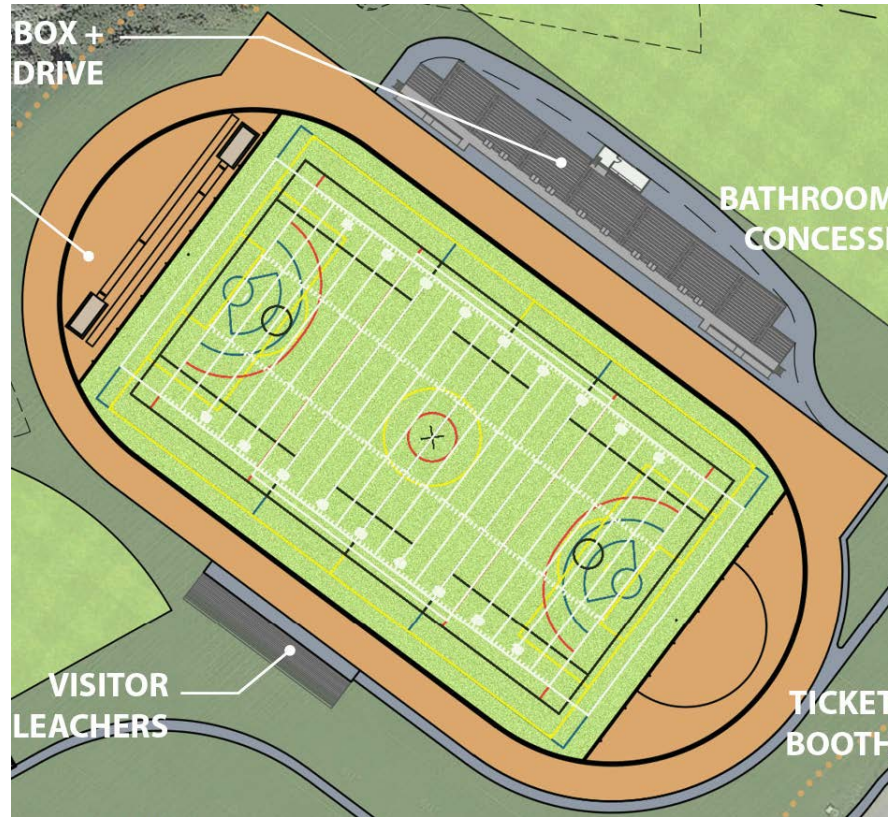
# Wayland High School Athletic Facility Strategic Master Plan | 2017



## 4. Preferred Improvements Plan (Enlargement B)



## 4. Preferred Improvements Plan (Enlargement C)



## **Renovation of Existing Stadium Complex + Synthetic Turf Field**

**Relationship of the High School Athletic Facilities to the Town's Drinking Water Supply**

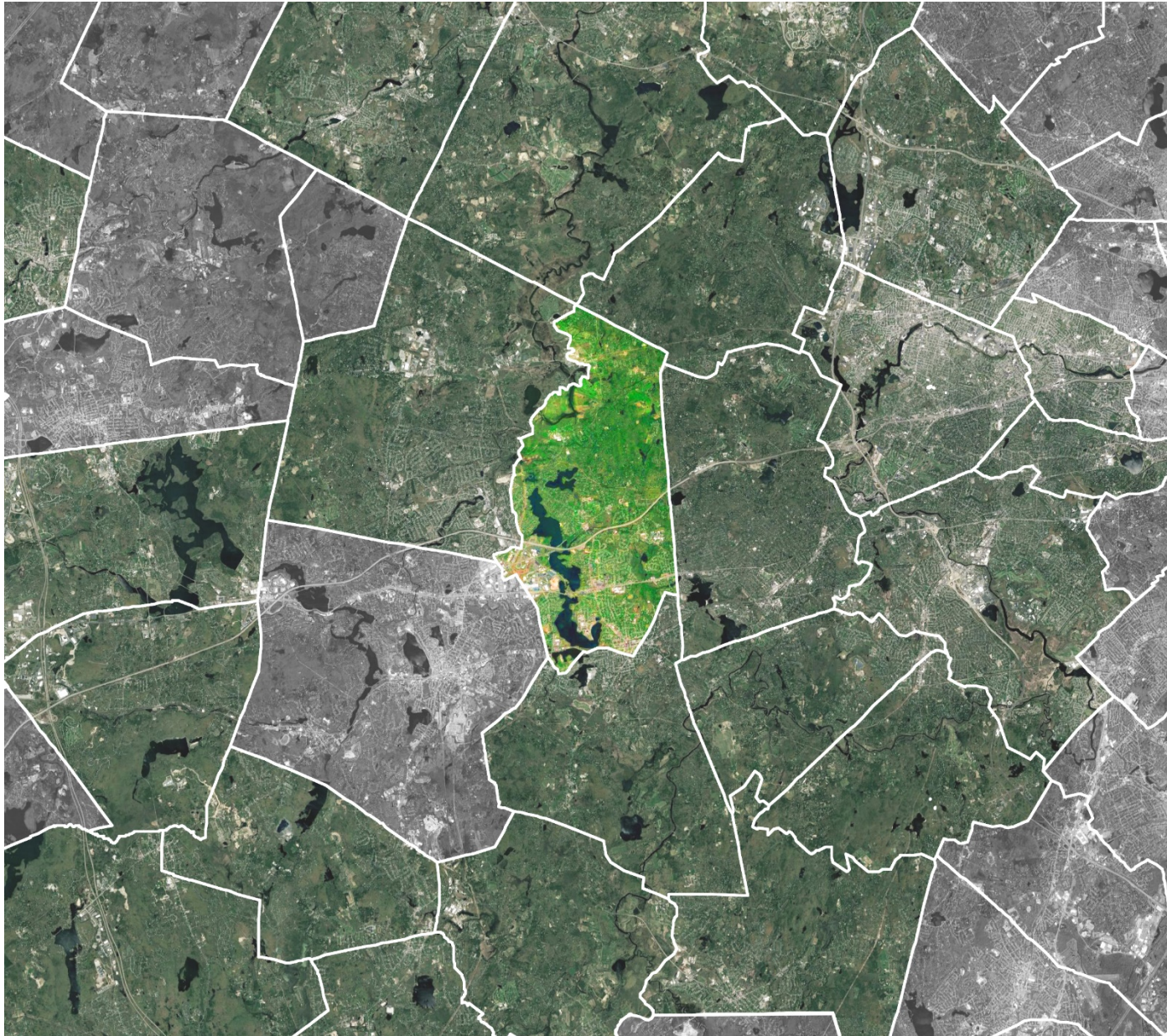
**Advances in Turf Systems**

**Variety of Infill Material Options**

**Shortage of Recreational Fields Town-wide | High Level of Use + Impact to Other Natural Turf Fields**

**Neighboring Communities with Synthetic Turf Fields**





## Neighboring Communities with Synthetic Turf Fields

## **4. Preferred Improvements Plan**

### **Primary Benefits of the Preferred Plan**

**New facilities correct deteriorated conditions, deficiencies, code issues, ADA concerns**

**Higher performance all facilities | relief to maintenance forces**

**Improved track configuration**

**Larger primary field footprint (+ ½ acre) increased capacity**

**Improved baseball field footprints + improved orientation**

**Upgraded, dedicated softball field with perimeter fencing**

**Tennis courts better support community**

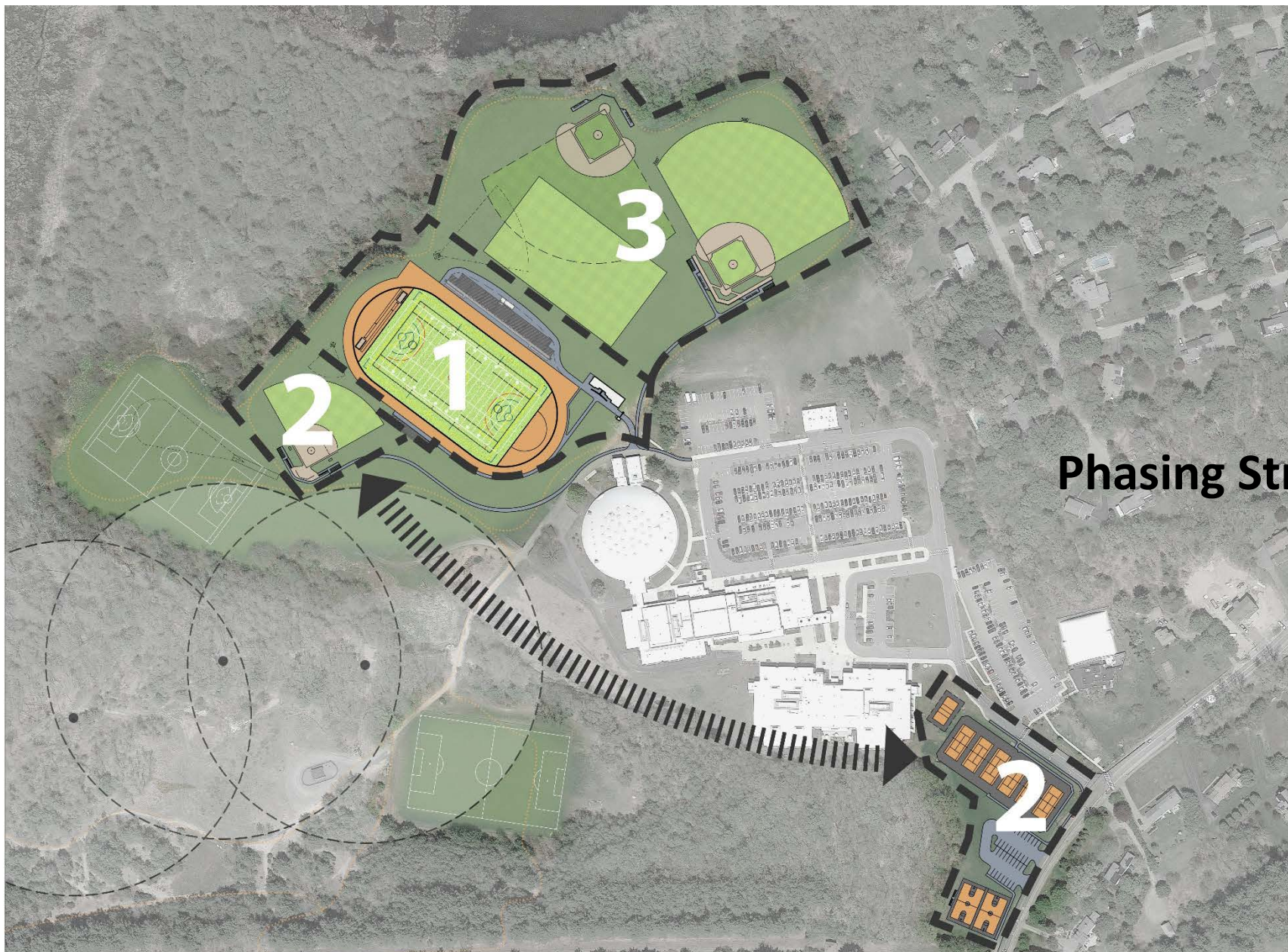
**One new basketball court**

**Upgraded and more flexible multi-use field footprint**

**Storage conundrum solved**

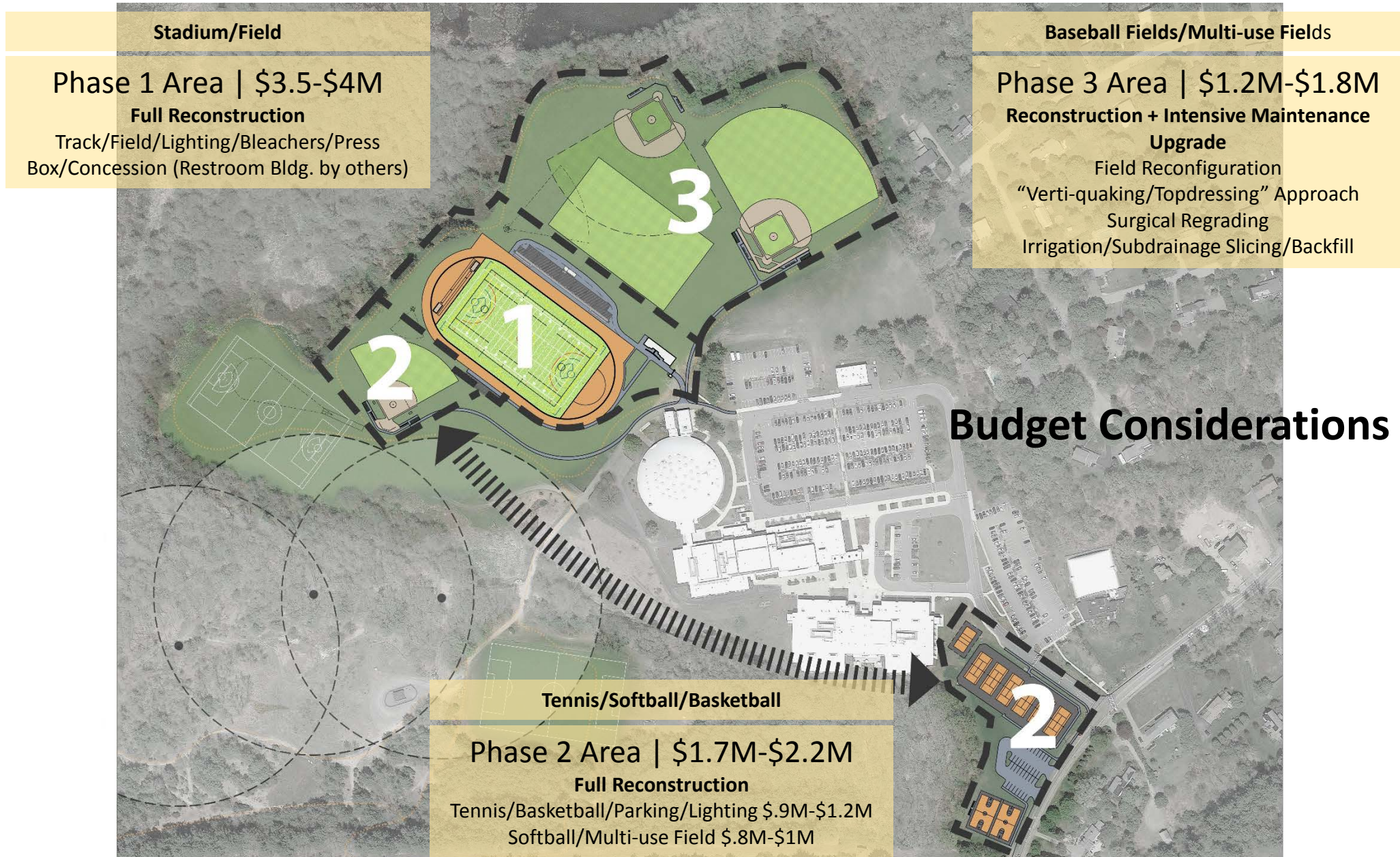
**Pathways link to all facilities**

**New gateway created to track + field**



## 4. Preferred Improvements Plan

# Wayland High School Athletic Facility Strategic Master Plan | 2017



## 4. Preferred Improvements Plan



## **Important Takeaways**

**Environmental Compliance**

**Tricky Site**

**Strong Solutions are Available**

**Conditions Warrant Immediate Attention**

**Events Will Need to be Relocated**

**Inconveniences During Construction**



**THANK YOU !!**

**Questions | Comments**