

WAYLAND RESIDENT STUDENTS (Projected 2014)

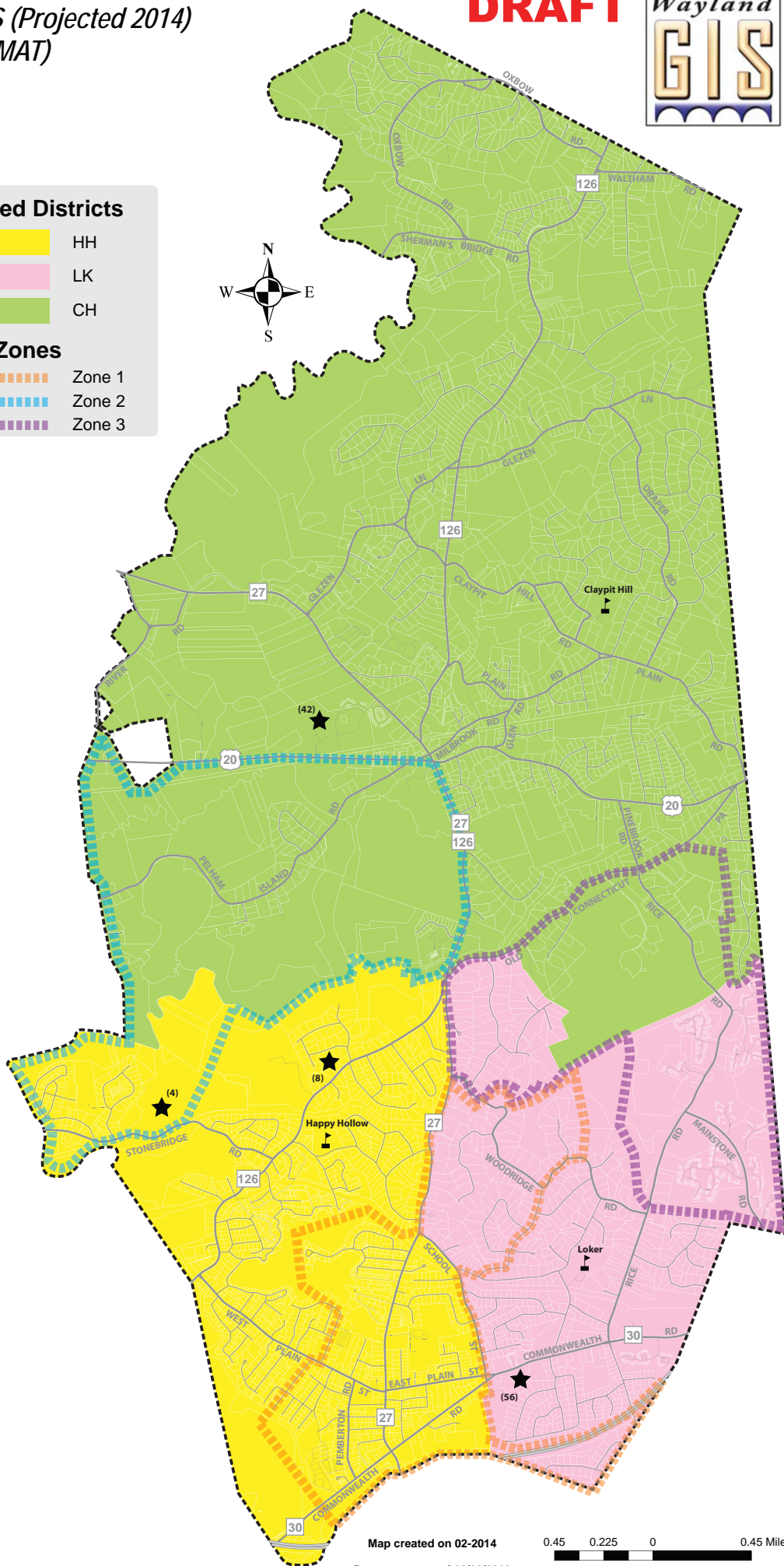
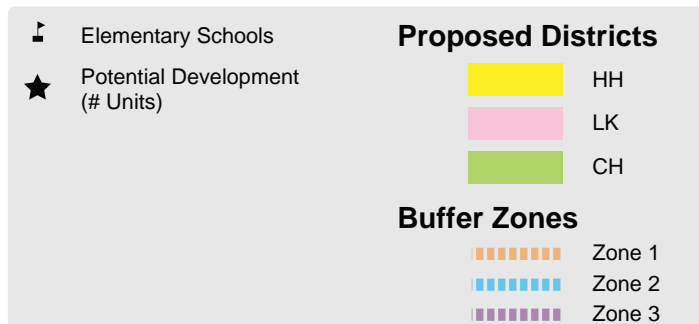
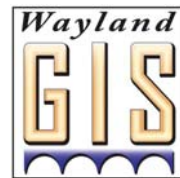
MAP 2.5: K-5 (HH3,LK2,CH4 FORMAT)

K & 1: 20 Students per Classroom

2 & 3: 23 Students per Classroom

4 & 5: 25 Students per Classroom

DRAFT



Map created on 02-2014

0.45 0.225 0 0.45 Miles

Data current as of 10/16/2013